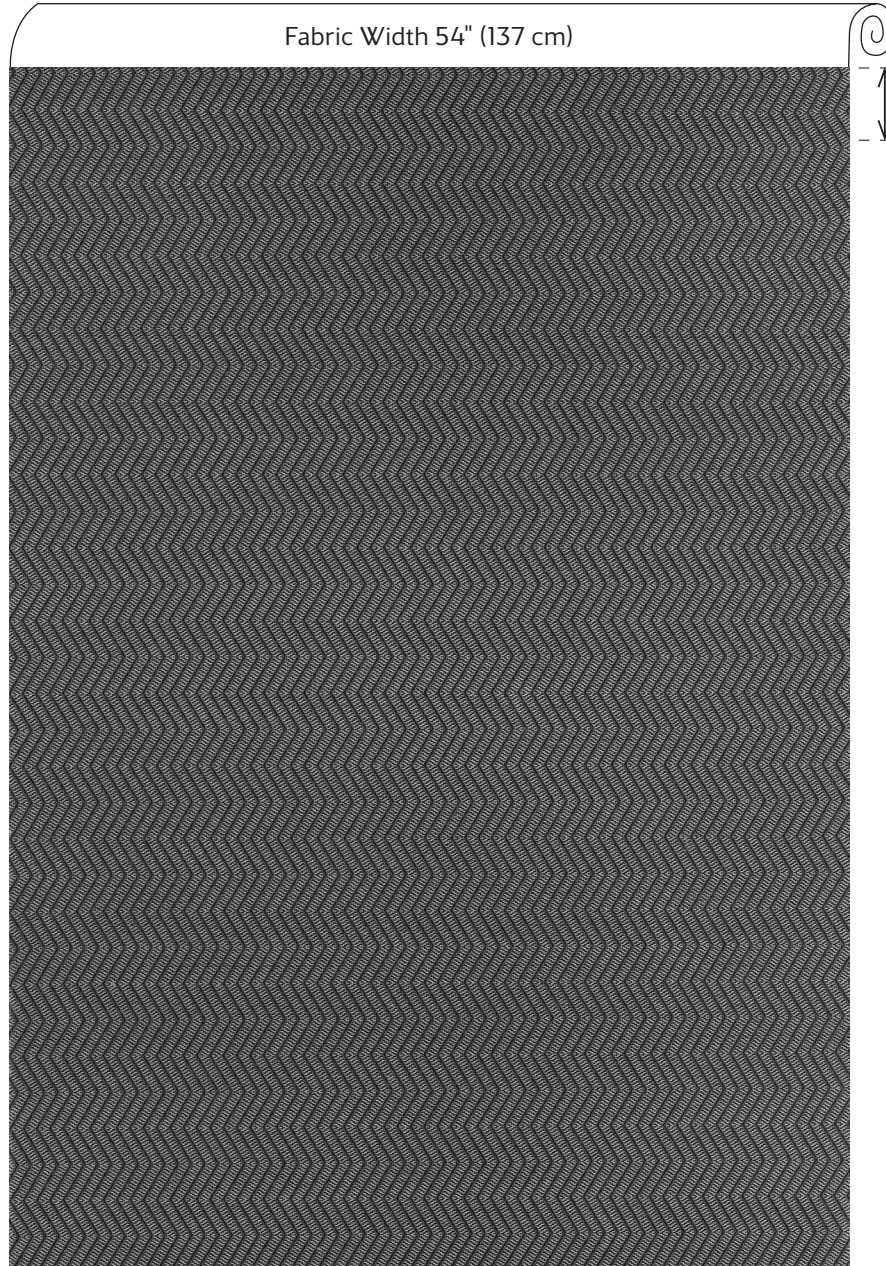


Matari Chevron

from

PINNACLE



Fabric Width 54" (137 cm)

4.75" (12 cm)
Vertical Repeat

1" (2.5 cm)
Horizontal Repeat

NOTE: *This pattern is railroaded. It is intended to be rotated 90 degrees for use.*

THIBAUT

thibautdesign.com US: 800 223 0704 UK: +44(0)20 7737 6555

©2017 Crypton, Inc. Crypton and the red planet logo are registered trademarks of Crypton, Inc.