

# THIBAUT

## ROUND WRAPPED MIRROR

7869-T36

*dimensions shown*

Overall size: 36" square x 1.5" deep

Frame: 4.5" at widest point

*Custom sizes available—please call for details*

*standard size also available*

7869-T42: Overall size: 42" square x 1.5" deep



## ROUND WRAPPED MIRROR

7869-T36

This stylish and modern mirror with round center and plain non-beveled mirror, is wrapped in a fine Thibaut grasscloth wallcovering and then finished with many layers of permanent varnish. A wide range of Thibaut wallcoverings are available, providing many options for color, pattern and texture. Our wrapped mirrors are fully customizable by the inch for a truly one-of-a-kind piece, made to perfectly fit your interior.

### *dimensions*

Overall size: 36" square x 1.5" deep

Frame: 4.5" at widest point

### *standard features*

Hardwood frame

Plain mirror

Cleated to hang either flat up or point up

### *grasscloth wallcoverings*

Requires 2 rolls of wallcovering (included).

We offer a wide assortment of Thibaut textured and grasscloth wallcoverings; [Click here](#) for our list of approved wallcoverings.

### *custom options*

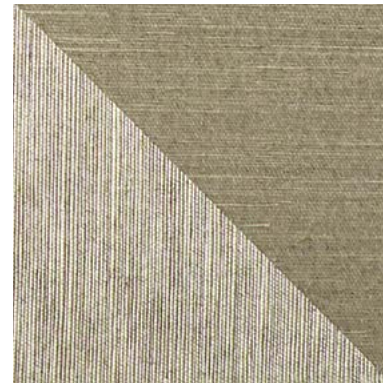
Customizable by the inch

Antique or beveled mirror

*Please call for details and pricing.*

### *as shown*

Wrapped in T5034 Shang Extra Fine Sisal in Grey from Grasscloth Resource Vol. 6



The natural grasscloth wallcoverings approved for our Occasional Wrapped Furniture may slightly vary in color from roll to roll as these are 100% natural fibers, absorbing the dyes at different rates. Additionally, the hand-finishing production process involves numerous sanding and clear sealer steps followed by protective coats of clear varnish which may slightly darken the final color. Grasscloth is a natural, handcrafted product known for its distinctive texture, color variations, and irregularities in weaving. These irregularities are part of the beauty of grasscloth and should be embraced as such. To maintain the integrity of the product, please avoid exposure to direct sunlight and humid conditions, as this may cause fading and lifting of the paper.